

Treefort Music Fest

KIN

SEPTEMBER 22-26: BOISE, ID

ADVANCE CONTACT: Adam Eichten / 605.212.7691 / adam@treefortmusicfest.com

DAY OF SHOW CONTACT: Arty Wall / 208-407-9423

ARTIST RELATIONS MANAGER: Jeni Rose / artists@treefortmusicfest.com

VENUE ADDRESS: 999 W Main St Suite p101, Boise ID 83702

PARKING AND LOAD IN: Load-in through the back door via ramp in back of venue. No reserved artist parking, so please find nearby street parking. Please advance any large vehicles so we can make parking arrangements. Venue staff will direct you to the load in / staging area.

SOUND/LINE CHECK: All sound checks will be festival line checks unless advanced. **Please arrive at the venue at least two hours prior to your set for load in.** There is 20 minutes between each act for set up and line checks and any time taken for set up and line checks over this time will cut into your set.

BACKLINE: Artists are to provide their own backline (unless otherwise advanced). If you would like to share gear with other bands on the bill please feel free to coordinate that in advance or night of show.

ARTIST HEADQUARTERS Owyhee Plaza (1109 Main Street)		
ARTIST CHECK IN 2 ND FLOOR OWYHEE PLAZA	ARTIST SETTLEMENT 2 ND FLOOR OWYHEE PLAZA	ARTIST HOSPITALITY TOP FLOOR (7) OWYHEE
Wed 9/22: 2:00pm-8:00pm Thur 9/23: 11:00am-10:00pm Fri 9/24: 11:00am-10:00pm Sat 9/25: 12:00pm-10:00pm Sun 9/26: 12:00pm-4:00pm	Wed 9/22: 2:00pm-10:00pm Thur 9/23: 10:00am-12:00am - 5:00pm-10:00pm Fri 9/24: 10:00am-12:00am - 5:00pm-10:00pm Sat 9/25: 10:00am-12:00am - 5:00pm-10:00pm Sun 9/26: 10:00am-12:00am - 4:00pm-10:00pm Mon 9/27: 10:00am - 12:00pm	Wed 9/22: 4:00pm-12:00am Thur 9/23: 4:00pm-12:00am Fri 9/24: 12:00pm-12:00am Sat 9/25: 12:00pm-12:00am Sun 9/26: 12:00pm-12:00am

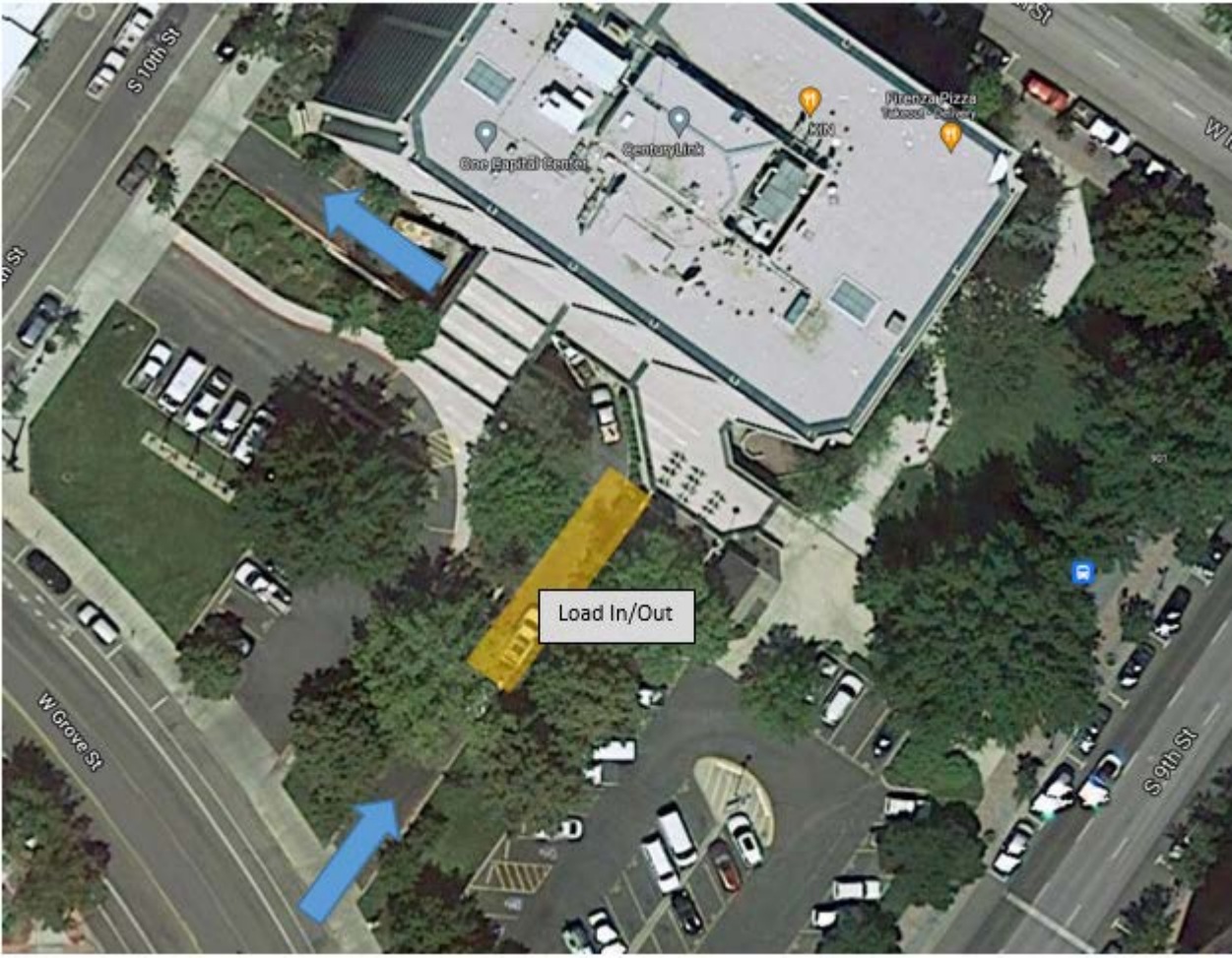
HOSPITALITY: The official artist hospitality area is located on the top floor of the Owyhee Plaza (1109 Main St). Throughout the weekend refreshments, snacks, and bar drinks will be served in this area and open to all performing artists. Drink tickets for the artist lounge will be provided for you in your artist packet upon check in, and drink tickets for your venue will come directly from your venue manager day of show.

MERCH: There will be a dedicated area for artist merchandise sales within the venue, and it is 100% Artist sells. Please talk to your venue manager and they will direct you to the artist merch area.

SETTLEMENT: All artists receiving compensation must settle in our accounting office located in the Owyhee Plaza (hours listed above). All settlements will be in a check unless cash is requested prior to **Monday, September 13th, 2021**. All bands receiving compensation (over \$600) will need to fill out a W9 (or W8) form in order or receive payment.

Production Specs

- QSC KW153 mains
- QSC KW181 subs
- JBL JRX200 monitors
- M32R @ FOH
- Standard microphone package



Load In/Out

One Capital Bank

CenturyLink

CIS

Pizzeria Pizza
Wood-Fire

S 10th St

W Grove St

S 9th St