



MAIN STAGE

SEPTEMBER 22-26 : BOISE, ID

ADVANCE CONTACT: Corbin Hohstadt / 425.633.5386 / chohstadt@PSIIUSA.COM

DAY OF SHOW CONTACT: Kevin Mazzaralli / 208.599.5829 kevin@treefortmusicfest.com

ARTIST RELATIONS MANAGER: Jeni Rose / artists@treefortmusicfest.com

VENUE ADDRESS: 1201 W GROVE ST. BOISE ID 83702

PARKING AND LOAD IN: Load-in will be through 13th Street entrance on the west end of parking lot (see overview map). Please text the DOS contact when you are 15 minutes out and they will direct you to the load in / staging area. Artist parking during your set is located in the parking lot adjacent to the venue on the corner of 13th and Front St. (A1 Heating and Cooling Building). Please advance any large vehicles so we can make parking arrangements and after your set and load out please move your vehicle to street parking.

SOUND/LINE CHECK: All sound checks will be festival line checks unless advanced. Please arrive at the venue at least two hours prior to your set for load in. There is 30 minutes between each act for set up and line checks. Any time taken for set up and line checks over this time will cut into your set.

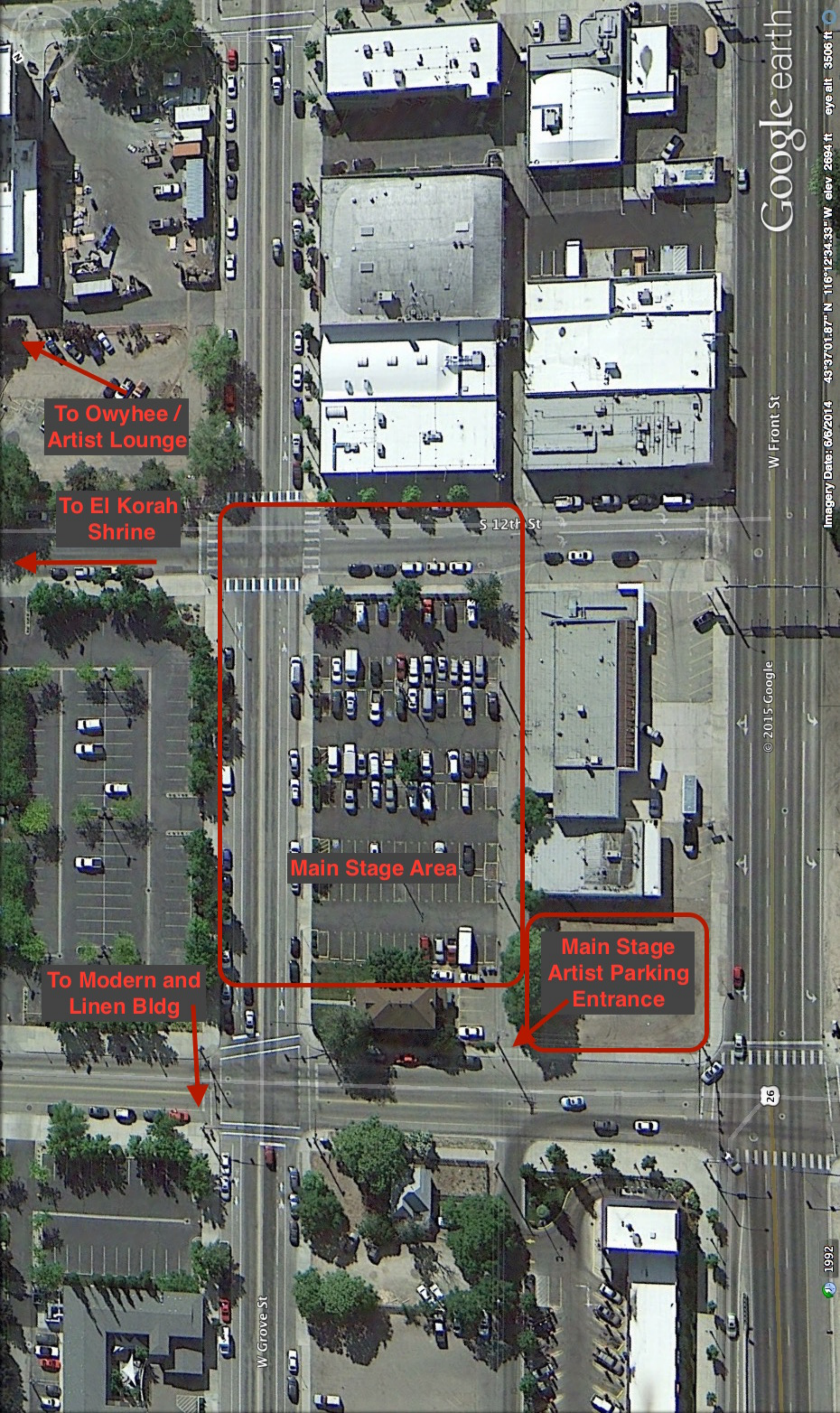
BACKLINE: It is highly recommended that Artists utilize provided backline to aid the production team's efforts in completing set changes on time to assure Artists are allowed their full allotted set times.

ARTIST HEADQUARTERS Owyhee Plaza (1109 Main Street)		
ARTIST CHECK IN 2 ND FLOOR OWYHEE PLAZA	ARTIST SETTLEMENT 2 ND FLOOR OWYHEE PLAZA	ARTIST HOSPITALITY TOP FLOOR (7) OWYHEE
Wed 9/22: 2:00pm-8:00pm Thur 9/23: 11:00am-10:00pm Fri 9/24: 11:00am-10:00pm Sat 9/25: 12:00pm-10:00pm Sun 9/26: 12:00pm-4:00pm	Wed 9/22: 2:00pm-10:00pm Thur 9/23: 10:00am-12:00am - 5:00pm-10:00pm Fri 9/24: 10:00am-12:00am - 5:00pm-10:00pm Sat 9/25: 10:00am-12:00am - 5:00pm-10:00pm Sun 9/26: 10:00am-12:00am - 4:00pm-10:00pm Mon 9/27: 10:00am - 12:00pm	Wed 9/22: 4:00pm-12:00am Thur 9/23: 4:00pm-12:00am Fri 9/24: 12:00pm-12:00am Sat 9/25: 12:00pm-12:00am Sun 9/26: 12:00pm-12:00am

HOSPITALITY: The official artist hospitality area is located on the top floor of the Owyhee Plaza (1109 Main St). Throughout the weekend refreshments, snacks, and bar drinks will be served in this area and open to all performing artists. Drink tickets for the artist lounge will be provided for you in your artist packet upon check in. There will also be a tented area next to the Main Stage with light hospitality and catering during meal times.

MERCH: There will be a dedicated area for artist merchandise sales within the Main Stage area, and it is 80/20 Festival Sells split. Please bring your merch to the backstage and let the backstage manager know you are ready for a count it. Merch contract and Inventory Sheets can be found on the ARTIST FORTRESS link: <https://www.treefortmusicfest.com/artist-fortress/>

SETTLEMENT: All artists receiving compensation must settle in our accounting office located in the Owyhee Plaza (hours listed above). All settlements will be in a check unless cash is requested prior to Monday, September 13th, 2021. All bands receiving compensation (over \$600) will need to fill out a W9 (or W8) form in order or receive payment.



To Owyhee /
Artist Lounge

To El Korah
Shrine

Main Stage Area

Main Stage
Artist Parking
Entrance

To Modern and
Linen Bldg